

ᐱᐱᐱᐱ

ᐱᐱᐱᐱ

ᐱ ᐱ ᐱ

ᐱᐱᐱᐱ ᐱ

ᐱᐱᐱᐱ

ᐱᐱᐱᐱ

ᐱᐱᐱᐱ 13



- ~~Statistics 990~~

- ~~Study~~

- ~~Q&A~~

- ~~A~~

- ~~B~~

- ~~Flow~~

- ~~C~~

~~D~~ ~~EU, EFTA, EFTA~~

~~(SSR)~~

~~R~~ ~~: 1990, 1991~~

~~A~~

- Western, Northern (Nordic), Southern Europe, “German-speaking” countries

- Central, South-eastern, Eastern Europe (EU regions in blue, except NO, ICE, CH)



990



Estadística
II

gub

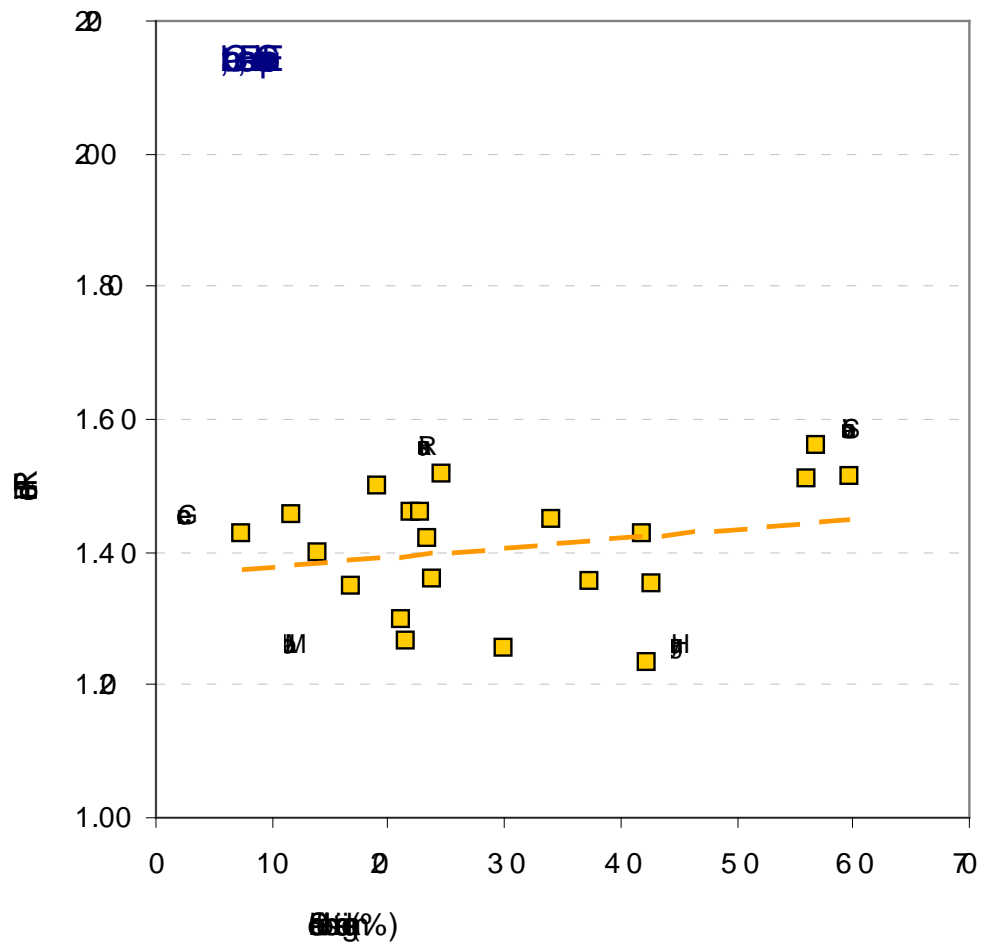
-

Frühjahr 2008

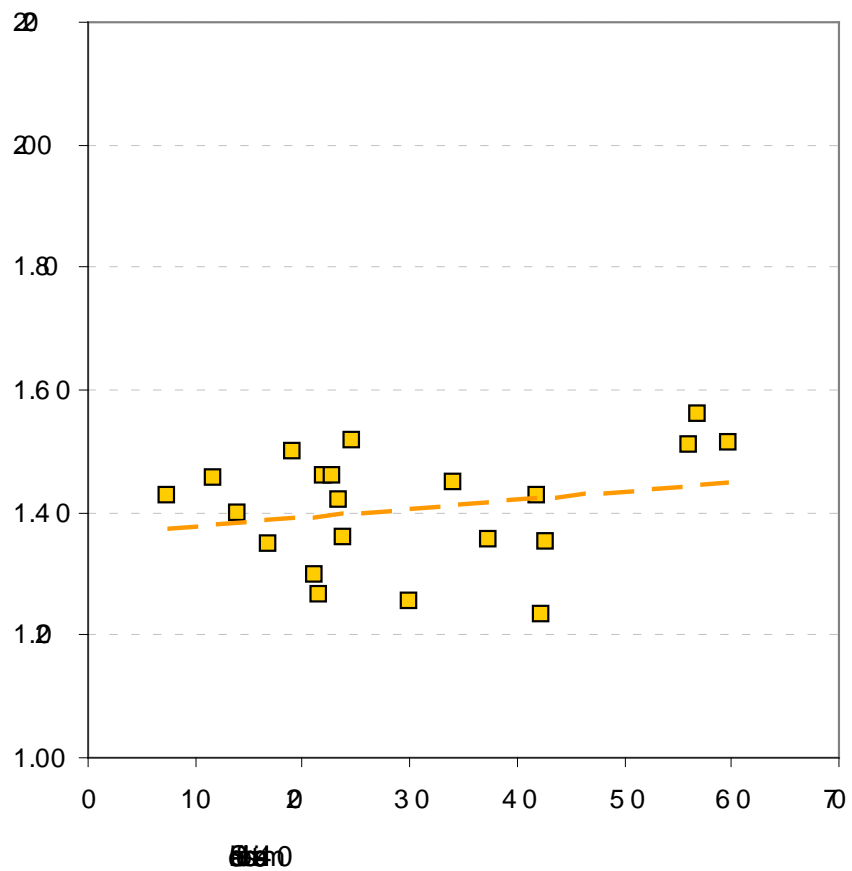
- ~~Chloride~~
- ~~Gold~~
- ~~Stoffwechsel~~
~~Erkrankung~~
- ~~Flu~~
- ~~g~~ ~~trifol~~ ~~g~~
~~h~~



DI - HTR011



DI - HTR011



- Tempo effects (1999), postponement transition (2002)
- 'low fertility trap' (2006)
- gender equity (2000, 2013)
- Fertility reversals at advanced levels of development (2009, 2011, 2011)
- Pattern of disadvantage (2004)
- Globalization, unemployment and economic uncertainty (2004)

- (2008, 2008, 2011)

Analysis

1

3/4 ~~1990~~

~~1990~~

(“wasted generation”)

3/4 ~~1990~~

3/4 ~~1990~~

3/4 ~~1990~~ -213% ~~1990~~ in (1990-2011)

The working-age poor are being pinched by a cap on welfare payments. Wealthy parents have been stripped of child benefit. University tuition fees have rocketed. Everyone is paying more VAT. But austerity seems much less austere if you are old. Pensioners, who fared notably well in the boom years, have been coddled in the bust.

1988

1989

1990

Fig 2008

Miss(0.01)
 $\alpha <$

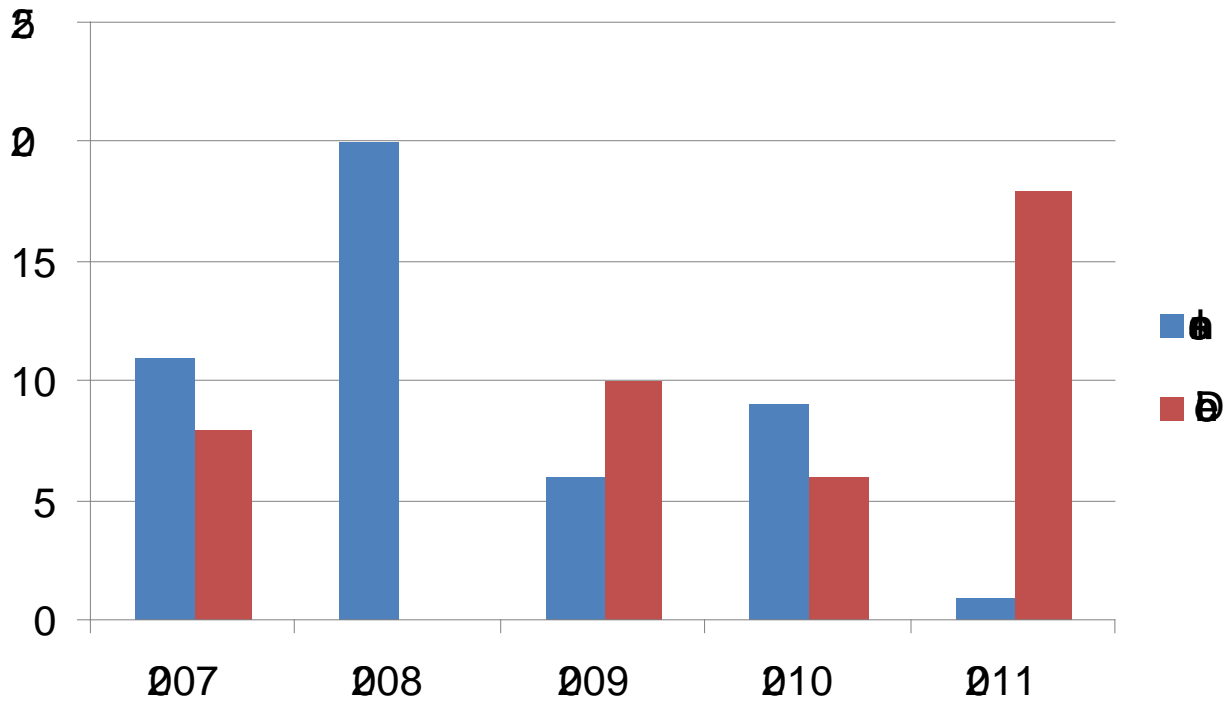


Fig. 10. The share of the population aged 15-19 years in the total population of the European Union (2005-2008 and 2008-2011)

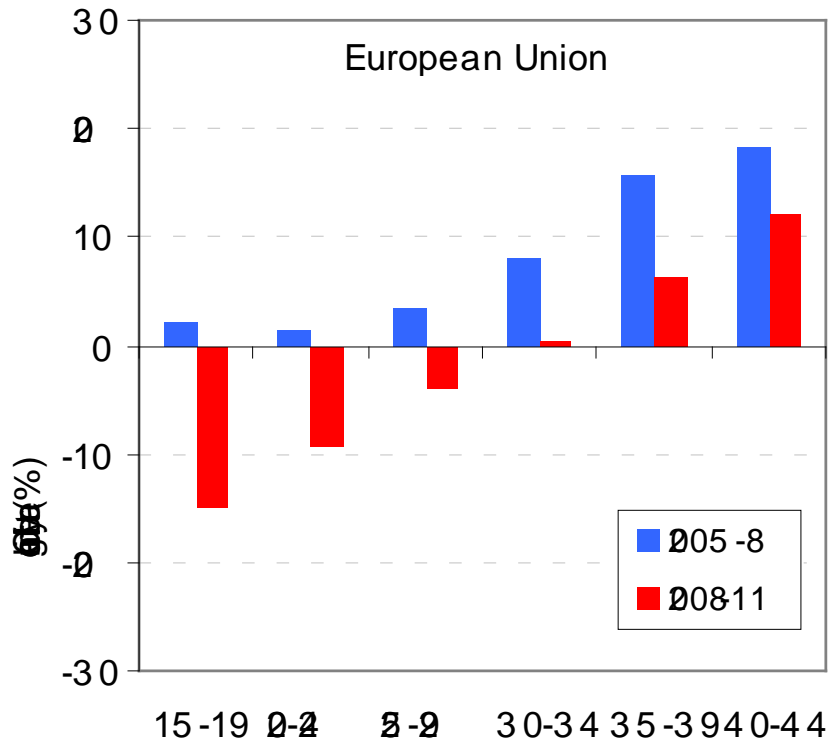
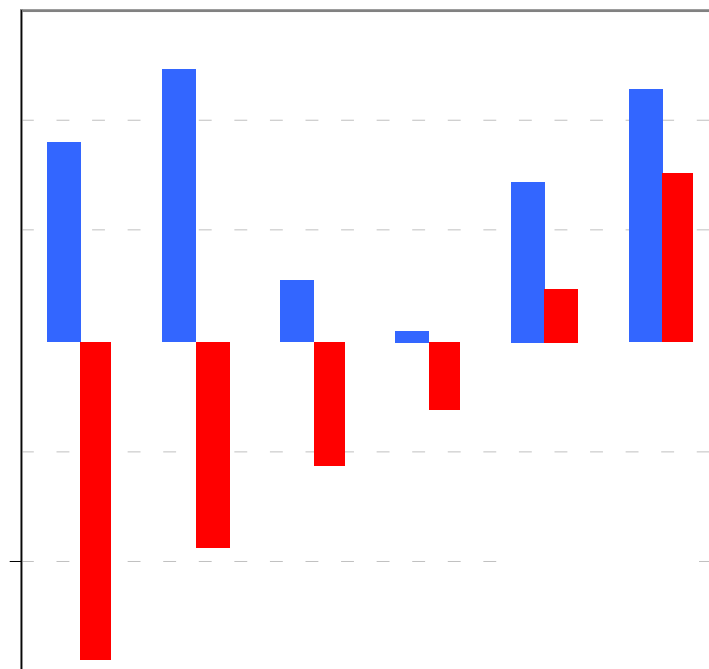
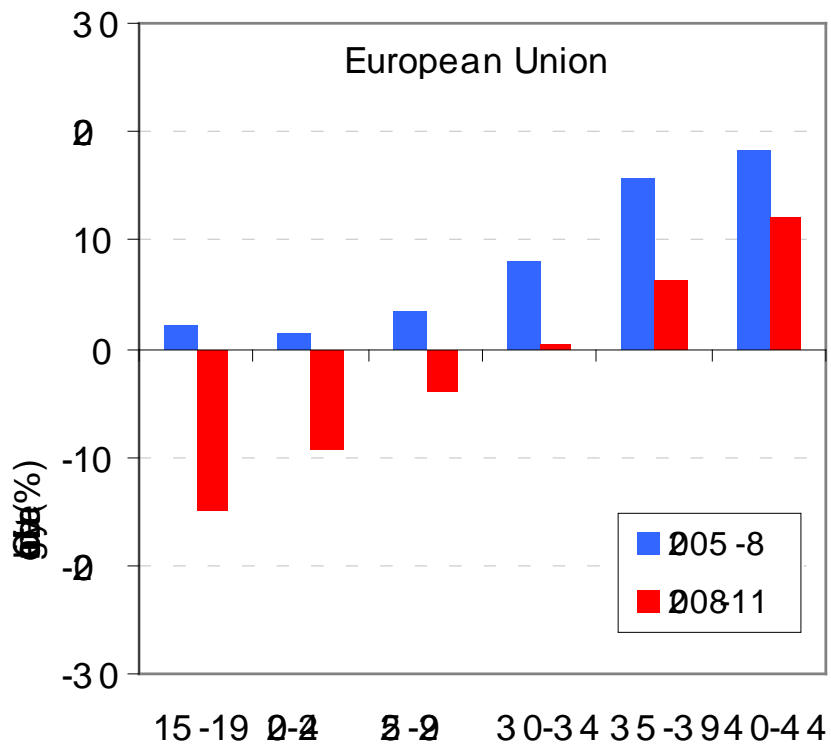


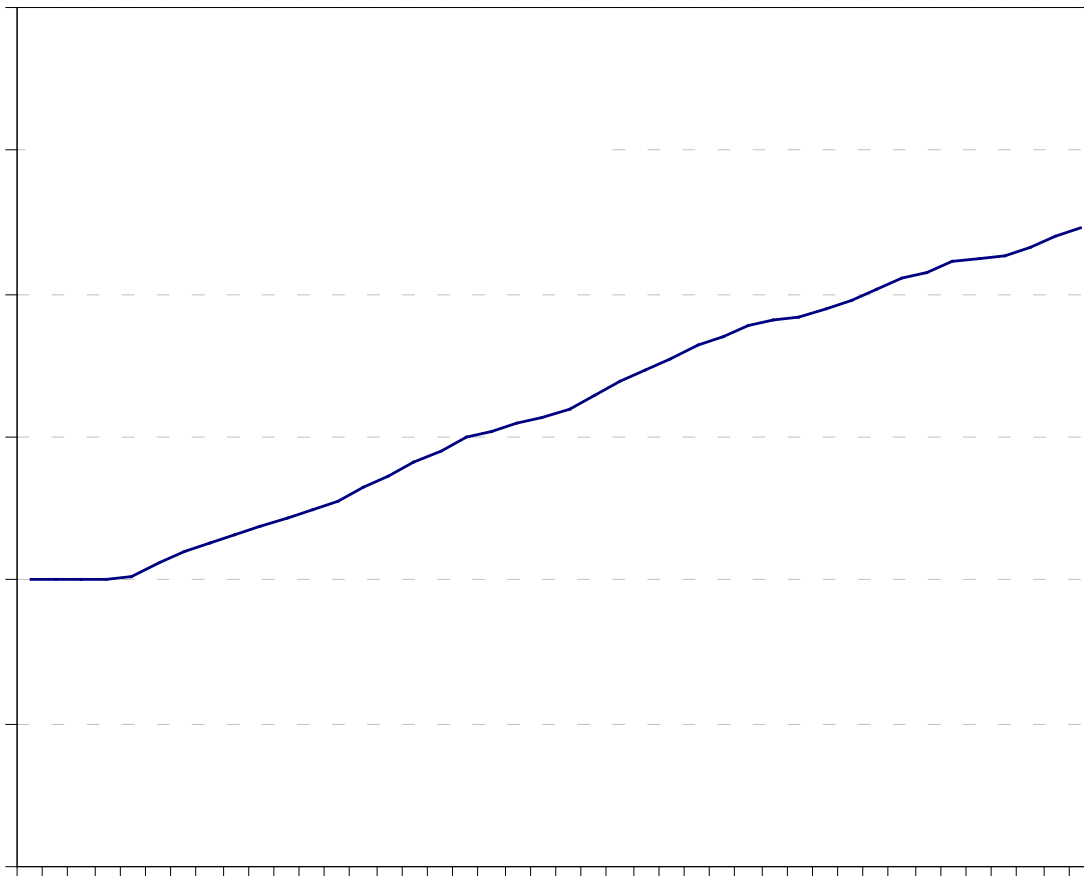
Fig. 8.11 (a) **European Union**
 (b) **European Union**



BRUNNEN

1907





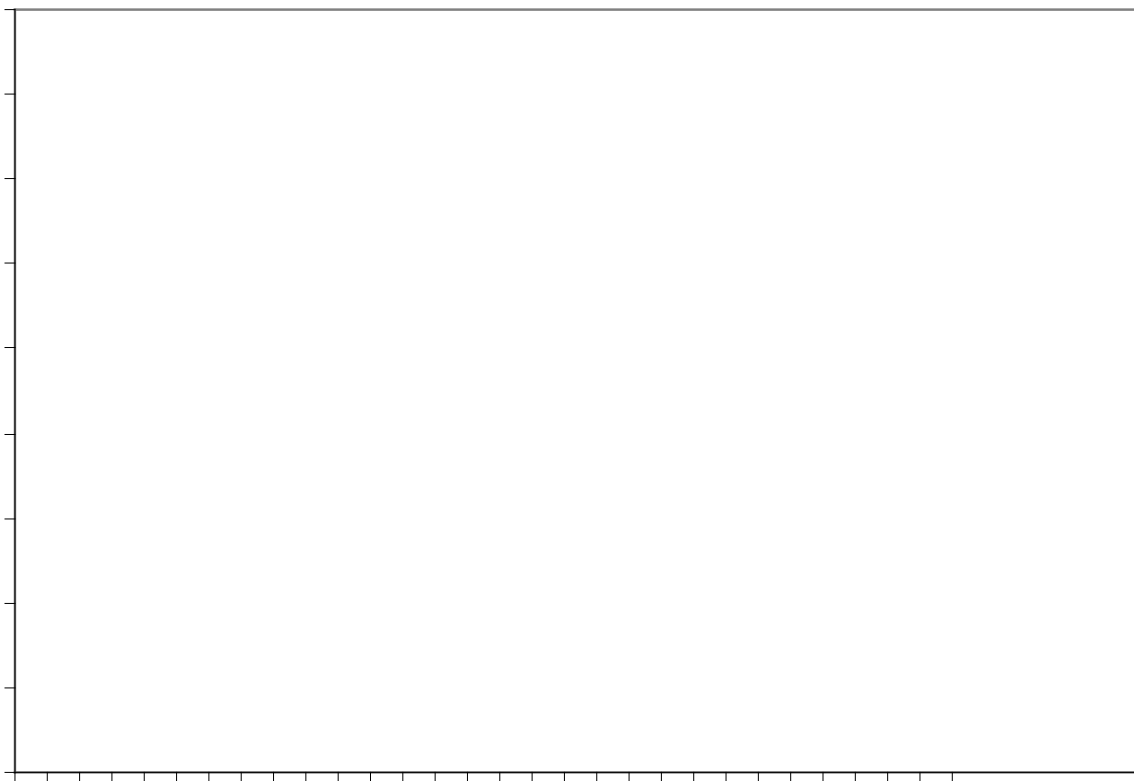
g
p

1975 - 2011

g

1975 - 2011

1975 - 2011



Trips

- ~~Trips~~

b - ~~in 1990s~~

of 1990s - 2000s

- ~~in 1990s~~ - ~~in 2000s~~

in 2004, in 2009

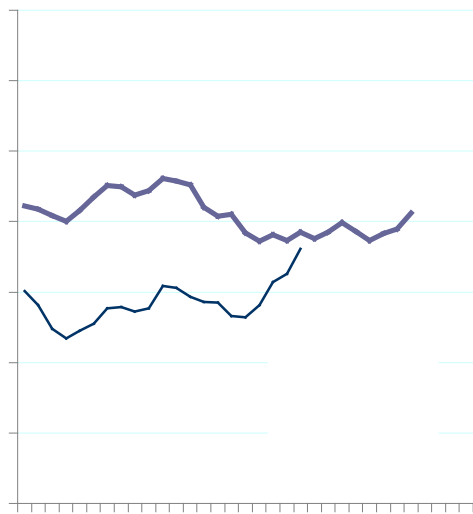
- ~~in 1990s~~

in

in

平均 中 国 (国)

2006; 2012



ER R

ER



• ~~Östra~~ (R)

• ~~S. 1970 (M)~~
~~ta 013, Ra 013)~~

• ~~Östra~~
~~Östra~~

• ~~Östra~~ 1975 b
~~ta 21 i 204 i 2025~~

ä

1.4 i 1.4.6 i

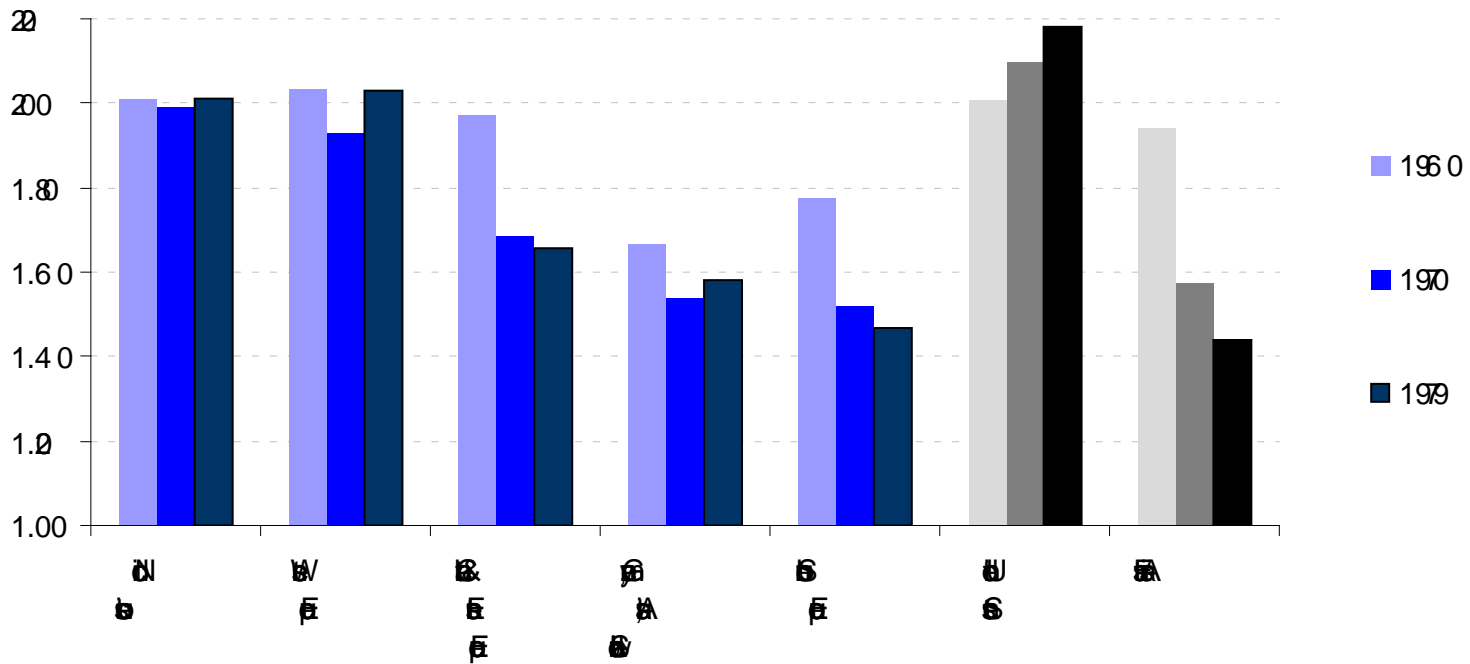
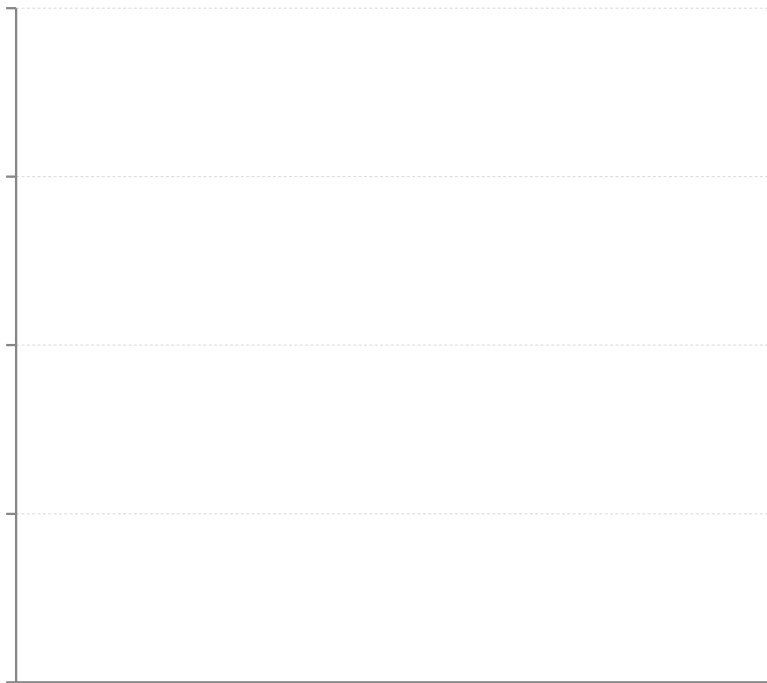


Table 196 8

Completed fertility at 1.80 or higher	Country	Share of women with				CTFR
		No children	1 child	2 children	3+ children	
1.80 or higher	Algeria	11.6	14.6	42.2	31.7	2.04
1.80 or higher	Algeria	0	14	38	2	1.91
1.80 or higher	Algeria	7.9	19.5	53.6	19.0	1.89
Completed fertility below 1.70						
1.70 or lower	Algeria	7.9	40.2	39.4	12.5	1.62
1.70 or lower	Algeria	2.5	28	38.0	17.8	1.59
1.70 or lower	Algeria	16.8	21	44.1	11.0	1.52

- Algeria



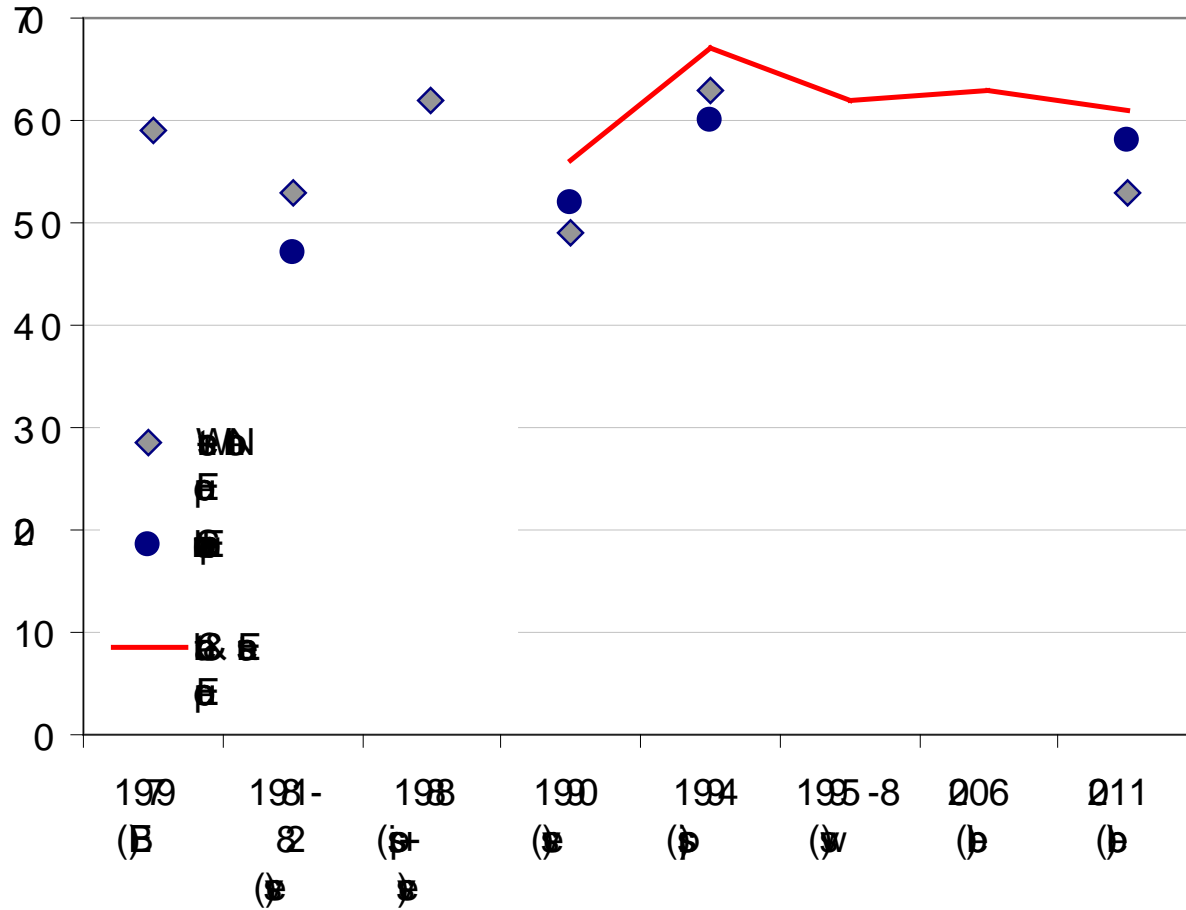


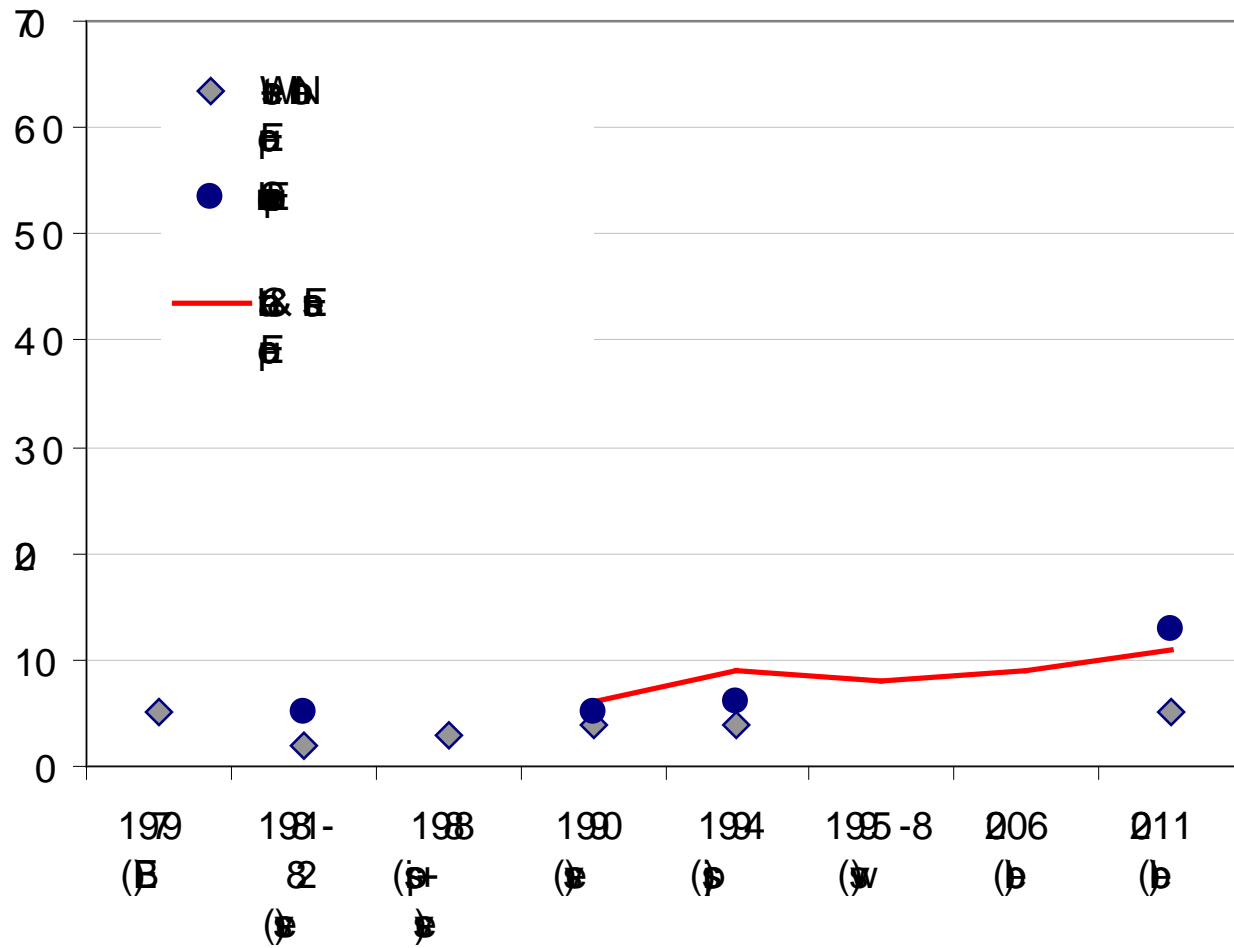
• 地

事

Estadística
1979-2011

UE (%)
2011





- ~~Wahlberg~~
~~Wahlberg~~
~~et al (2003)~~

~~et al (2005) :12~~

...“there is a remarkably pervasive desire (and supporting norms, structure, and biological predisposition) for two children when and if one can afford them and care for them”

|

|



8



1990s

1990s-2000s
1990s-2000s

- 1990s-2000s

- 1990s-2000s

- 1990s-2000s

- 1990s-2000s

3/4

3/4

FFFS

- Sub
tion (je

- 100% b



11/13

11/13



BS.TS.13.

11/13

Working Paper 5/13

VID

Agrib 011

- ~~1000~~
~~100~~
- Low Fertility Module: 186 ~~1000~~
~~100~~
- ~~5~~ ~~1000000~~
~~1050~~
- ~~10~~ ~~1000000~~
~~1000000~~

1



En

~~W/F~~

- ~~Friday 21~~
- ~~Op~~ - ~~En~~
- ~~W/F~~

~~L~~

- ~~W/F~~
-

~~Wasser~~

id/

~~Wasser~~

~~Wasser~~

~~Wasser~~

in

~~Wasser~~

~~Wasser~~

~~Wasser~~

~~Wasser~~

~~Wasser~~

is/te

~~Wasser~~

-~~Wasser~~+1

in

~~Wasser~~

-~~Wasser~~

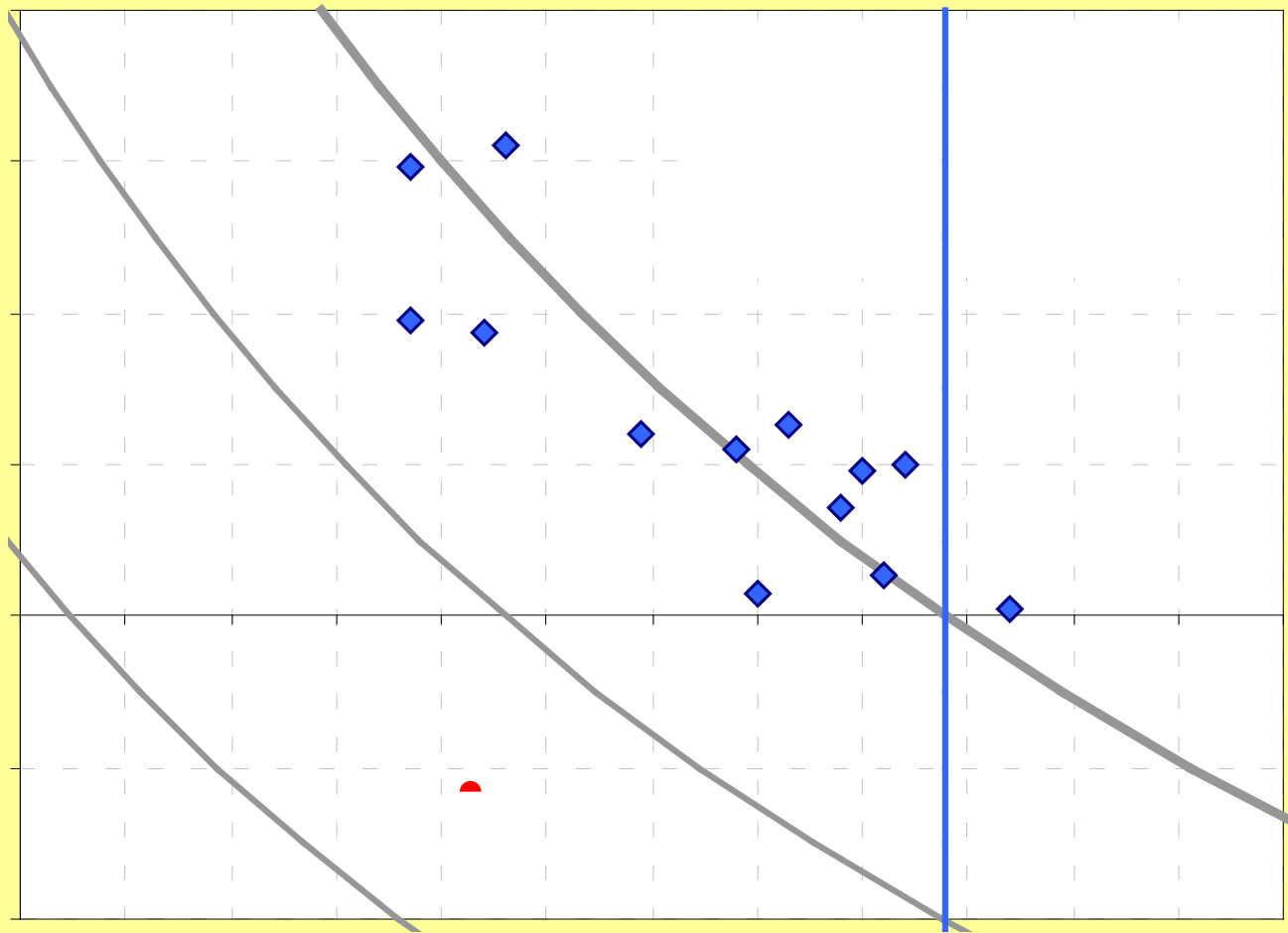
~~Wasser~~

~~Wasser~~

~~Wasser~~

id/

Abbildung
15-30) von 1975



Εύρη
τη

τη

- Η “τη” είναι
“τη”
τη

ΑΕ

f (2013)
τη
2012

and others: τη



Gap in
GDP

1980s - 2000s

- in 1980s

6 young men. 1980s

-6 (2010):

No country for



- ~~First~~
from the bottom or increase at the top?
- ~~Multiple~~
~~by~~
- ~~A~~ " ~~a~~ " ~~also~~
- ~~Step~~

reduction



100

100

100

100

100

100

100

100

100

100