



# Outline of the talk: Importance of a life-

---

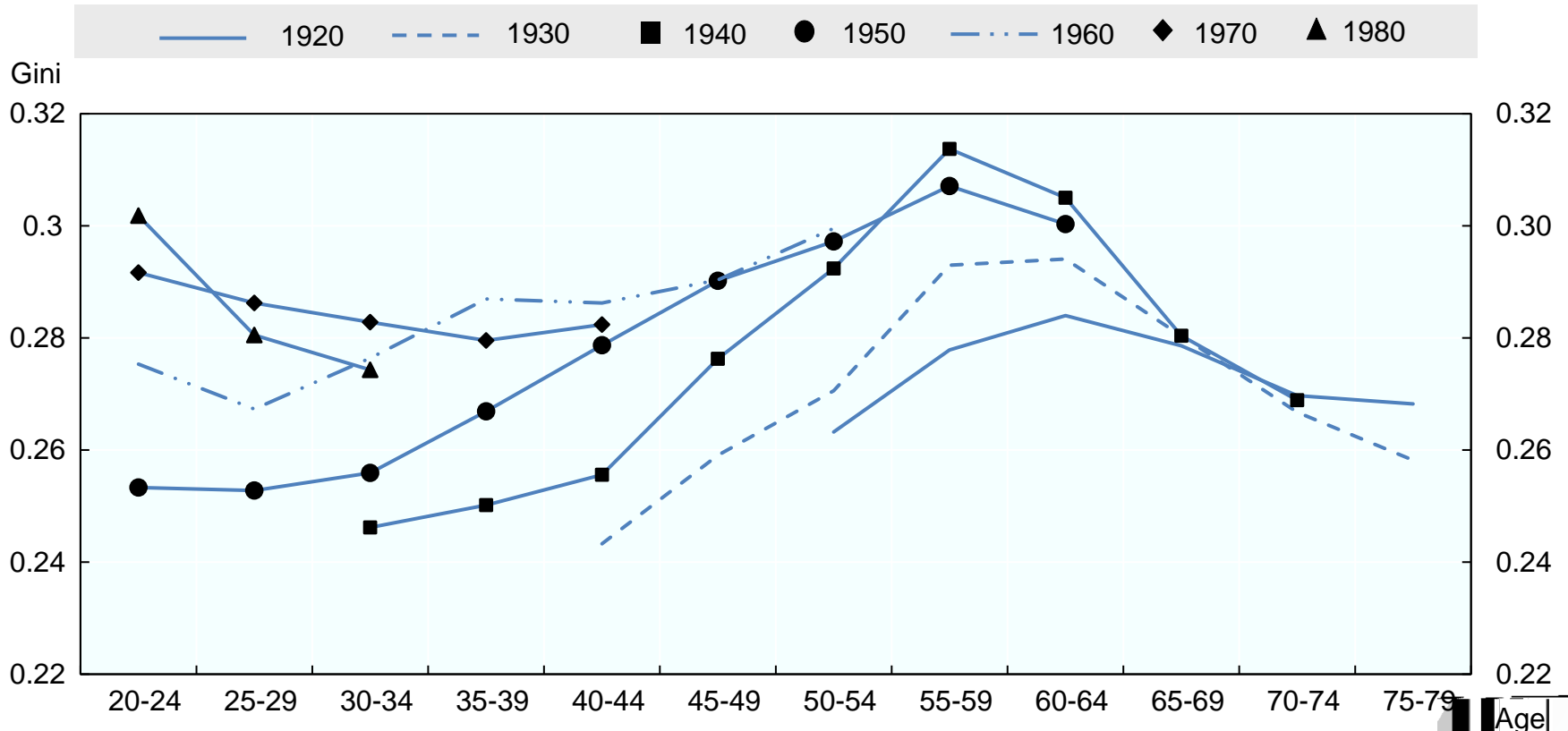






# Income inequality at a given age is higher today than in the past in most OECD countries

## Income Gini index by cohort and age group



Source: OECD (2017) - Preventing Ageing Unequally

Luxembourg Income Study







# Large pass-through from wage to pension inequality

---

Change in the Gini index of pensions for a 1 percentage point increase in the  
index of wages











---

[herve.boulhol@oecd.org](mailto:herve.boulhol@oecd.org)

<http://oe.cd/pau2017>

Twitter: @ OECD\_Social

