



## **Commission on the Limits of the Continental Shelf**

Distr.: General  
22 May 2000

Original: English

---

### **Seventh session**

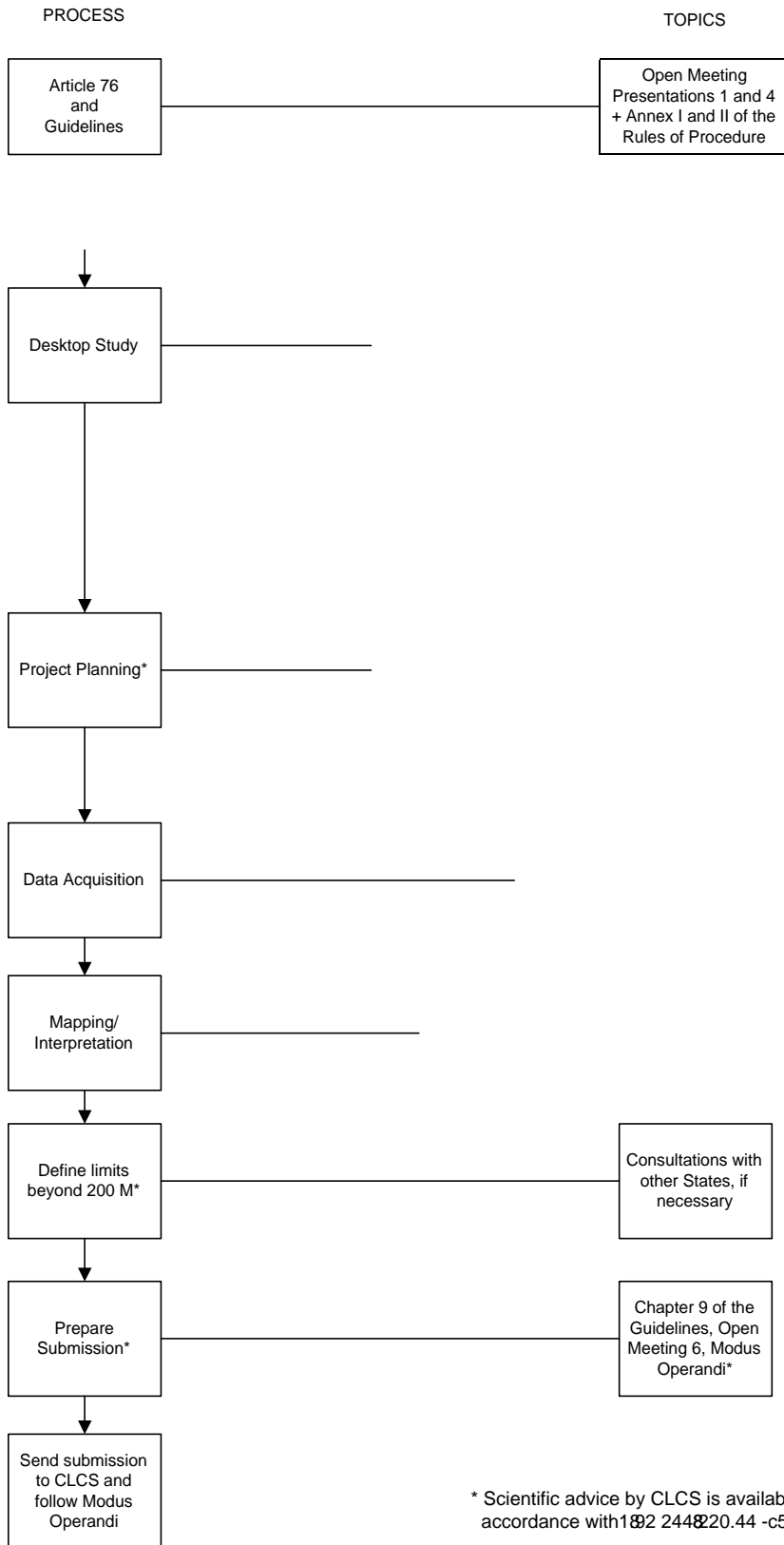
New York, 1-5 May 2000

## **Basic flowchart for preparation of a submission of a coastal State to the Commission on the Limits of the Continental Shelf**

**Adopted provisionally by the Commission at its seventh  
session on 5 May 2000**

1. At its sixth session (30 August-3 September 1999), the Commission agreed upon an action plan for training (CLCS/18, para. 14). Among the actions to be taken was the preparation of a manual in the form of a flowc2(i)--6(a)8.71d oanuaT-(071)709.9(o)-20.5pwaswawaken

**BASIC FLOWCHART FOR PREPARATION OF A SUBMISSION OF A COASTAL STATE TO THE COMMISSION ON THE LIMITS OF THE CONTINENTAL SHELF**



\* Scientific advice by CLCS is available in accordance with 1982 244820.44 -c58.64 m1182 577.44 l9r16.285784 20.3 385784 20.3.985784 20.3